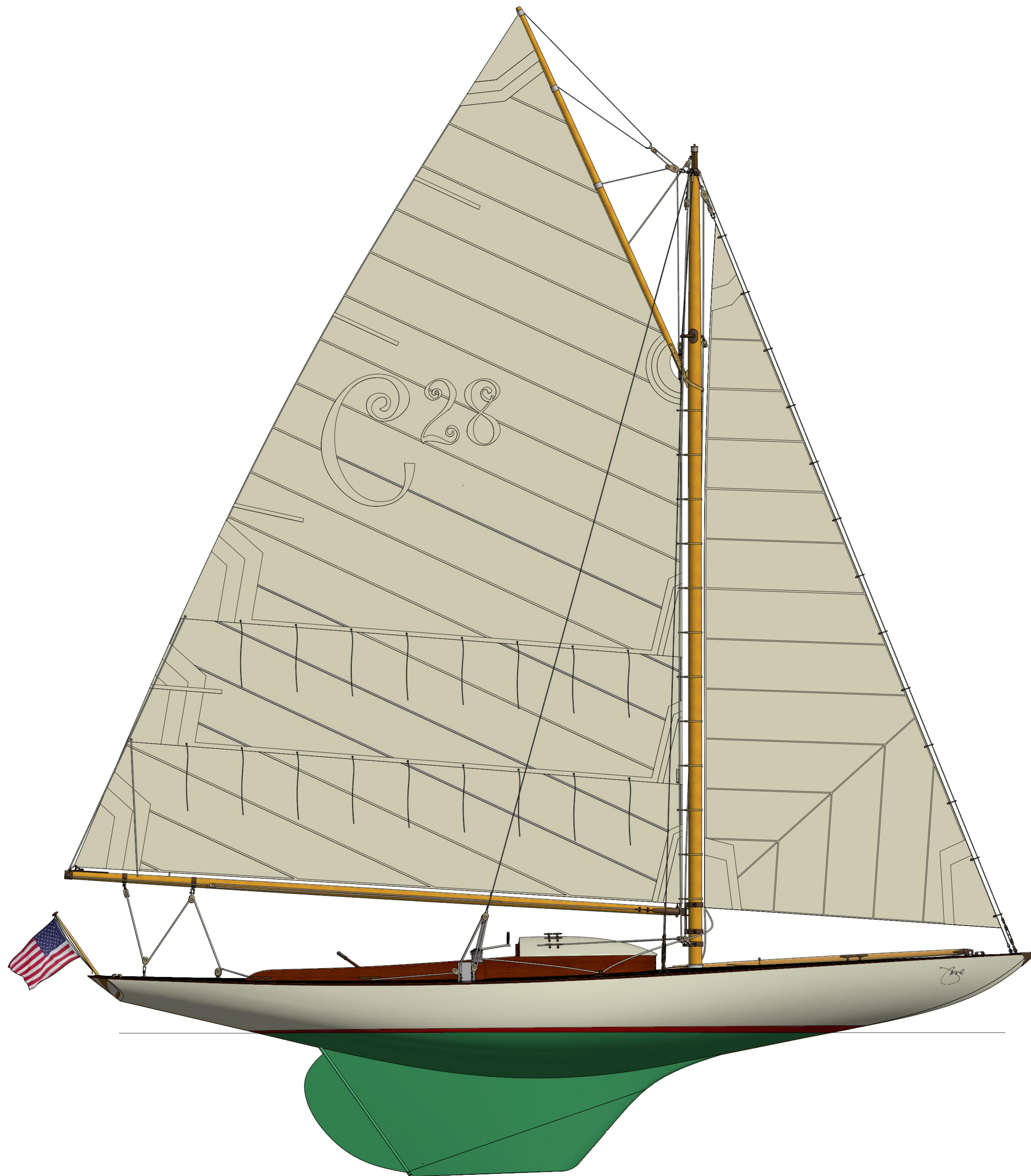


von steuerbord (1 : 25)



28' Camden Class
Design B. B. Crowninshield 1915

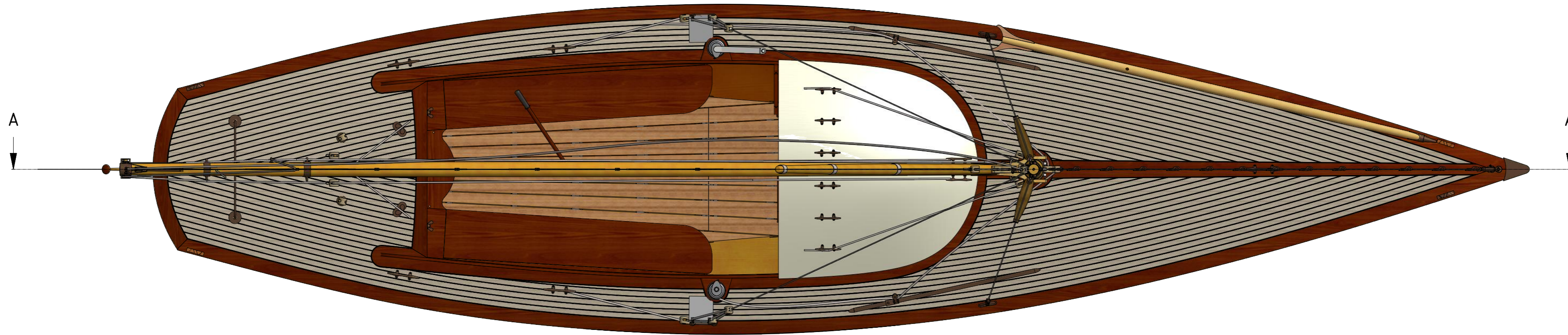
Drawing P. Heuken
www.C28.de



28' Camden Class
 Design B. B. Crowninshield 1915

Drawing P. Heuken
 www.C28.de

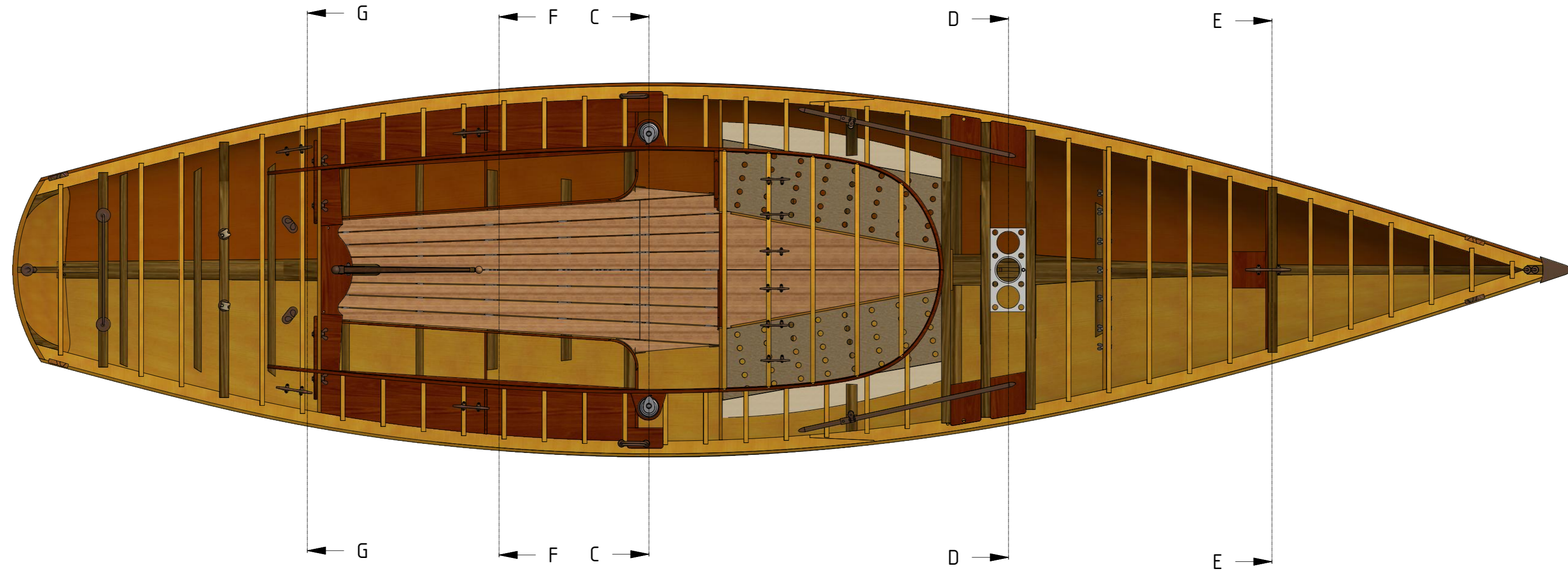
Draufsicht mit Rigg (1 : 20)



28' Camden Class
Design B. B. Crowninshield 1915

Drawing P. Heuken
www.C28.de

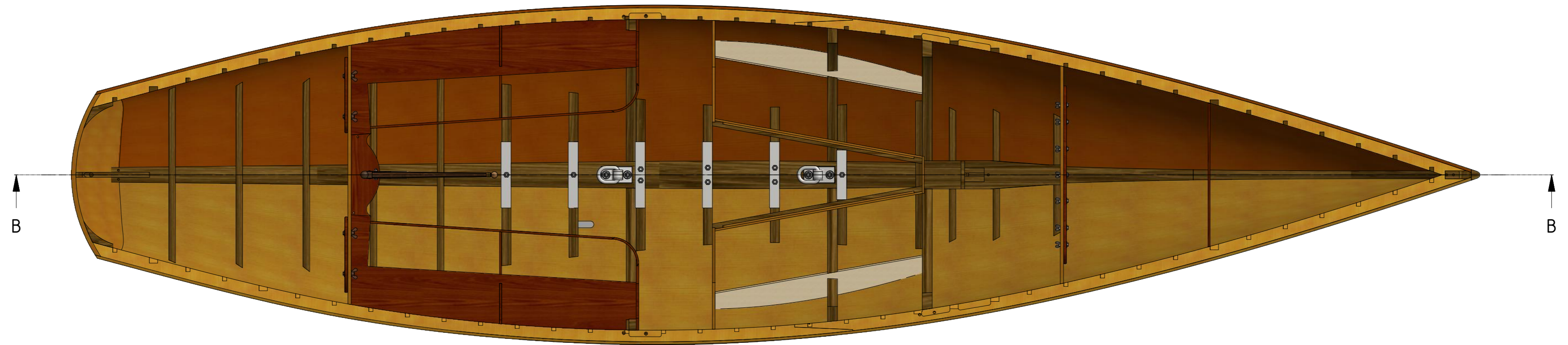
Rumpf ohne Deck (1 : 20)



28' Camden Class
Design B. B. Crowninshield 1915

Drawing P. Heuken
www.C28.de

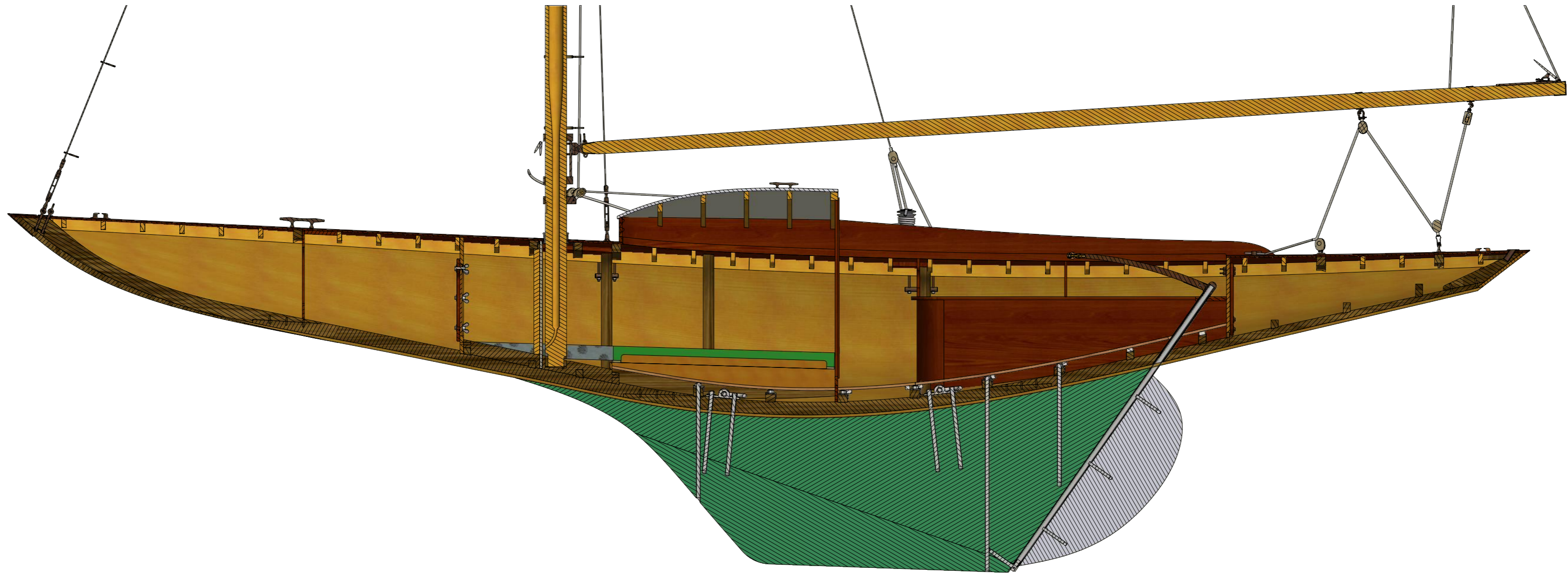
Rumpf ohne Einbauten (1 : 20)



28' Camden Class
Design B. B. Crowninshield 1915

Drawing P. Heuken
www.C28.de

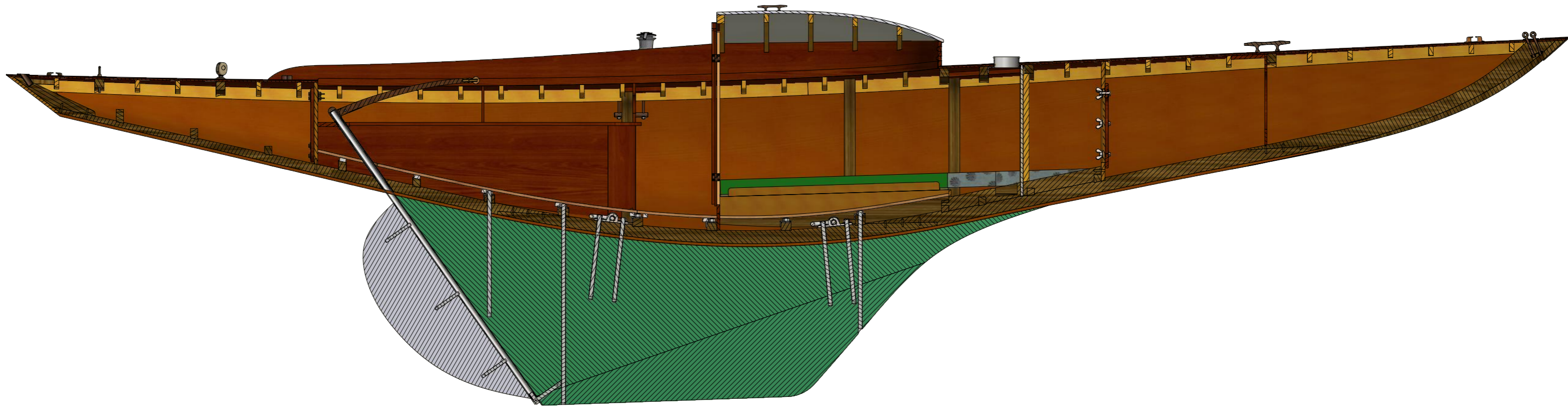
A-A (1 : 20)



28' Camden Class
Design B. B. Crowninshield 1915

Drawing P. Heuken
www.C28.de

B-B (1 : 20)



28' Camden Class
Design B. B. Crowninshield 1915

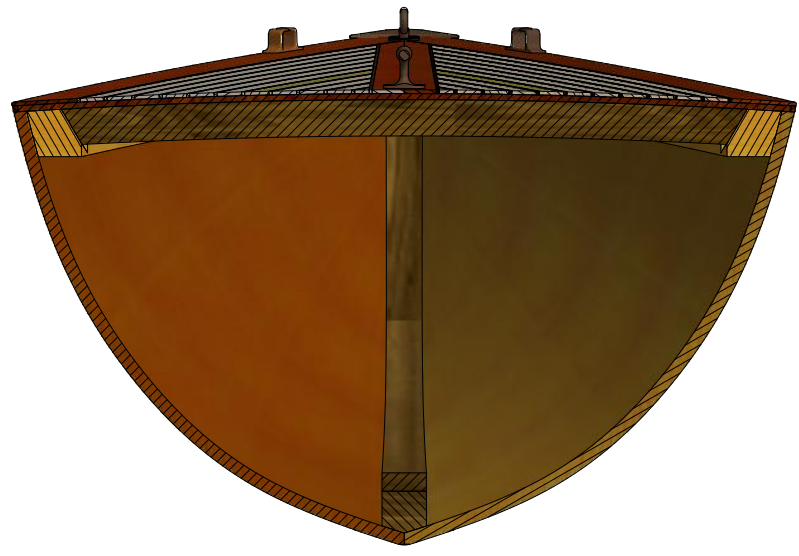
Drawing P. Heuken
www.C28.de

8 7 6 5 4 3 2 1

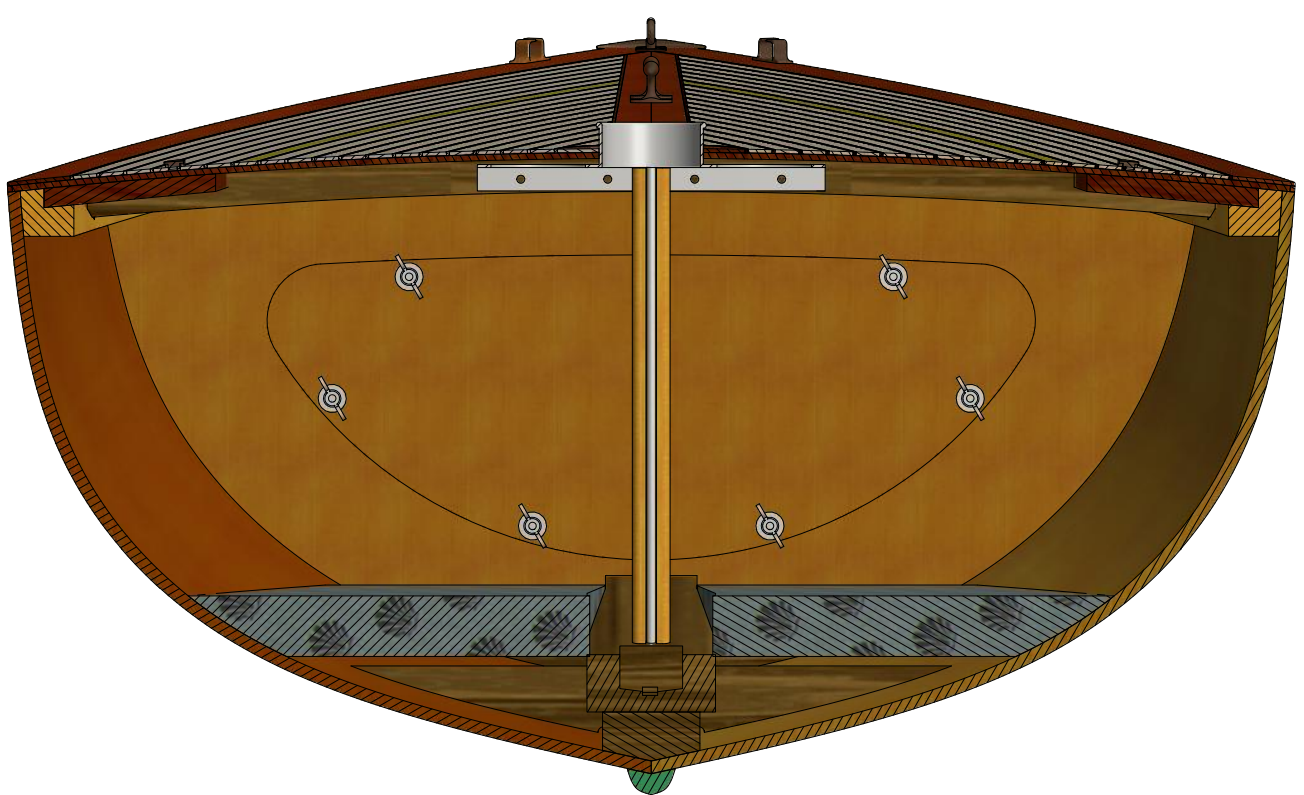
H
G
F
E
D
C
B
A

H
G
F
E
D
C
B
A

E-E (1 : 10)



D-D (1 : 10)

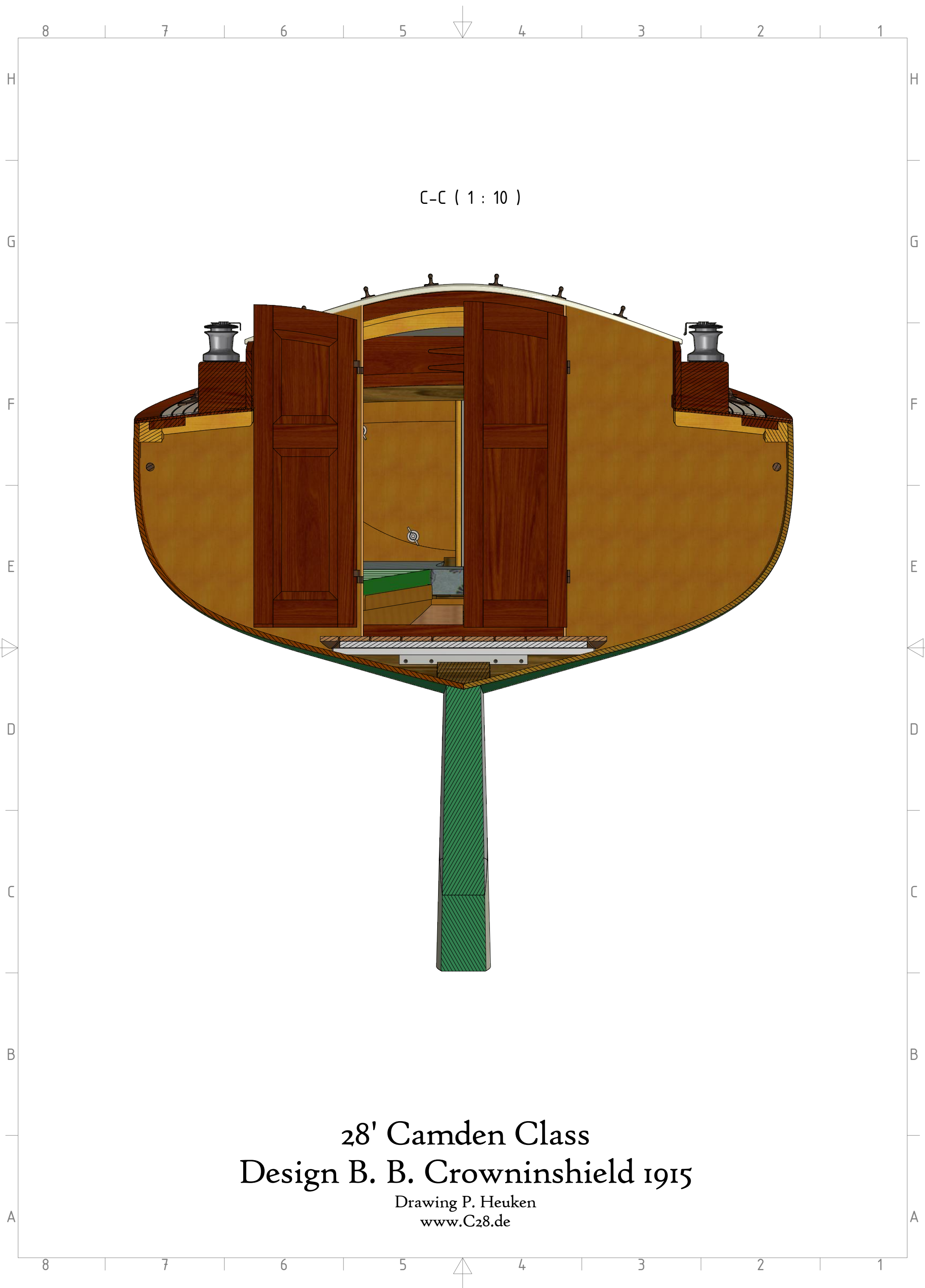


28' Camden Class
 Design B. B. Crowninshield 1915

Drawing P. Heuken
www.C28.de

8 7 6 5 4 3 2 1





C-C (1 : 10)

28' Camden Class
Design B. B. Crowninshield 1915

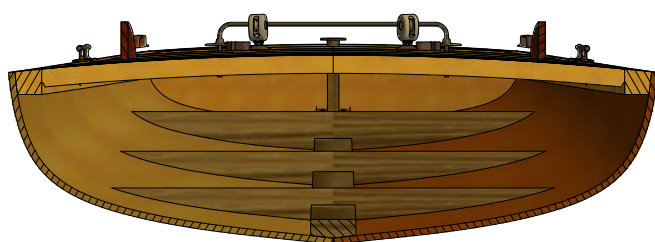
Drawing P. Heuken
www.C28.de

8 7 6 5 4 3 2 1

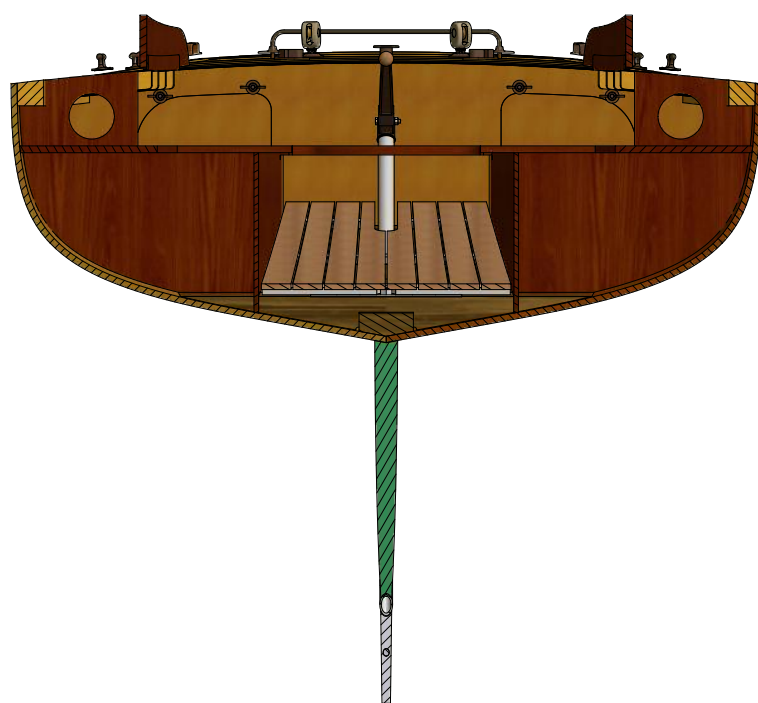
H
G
F
E
D
C
B
A

H
G
F
E
D
C
B
A

G-G (1 : 20)



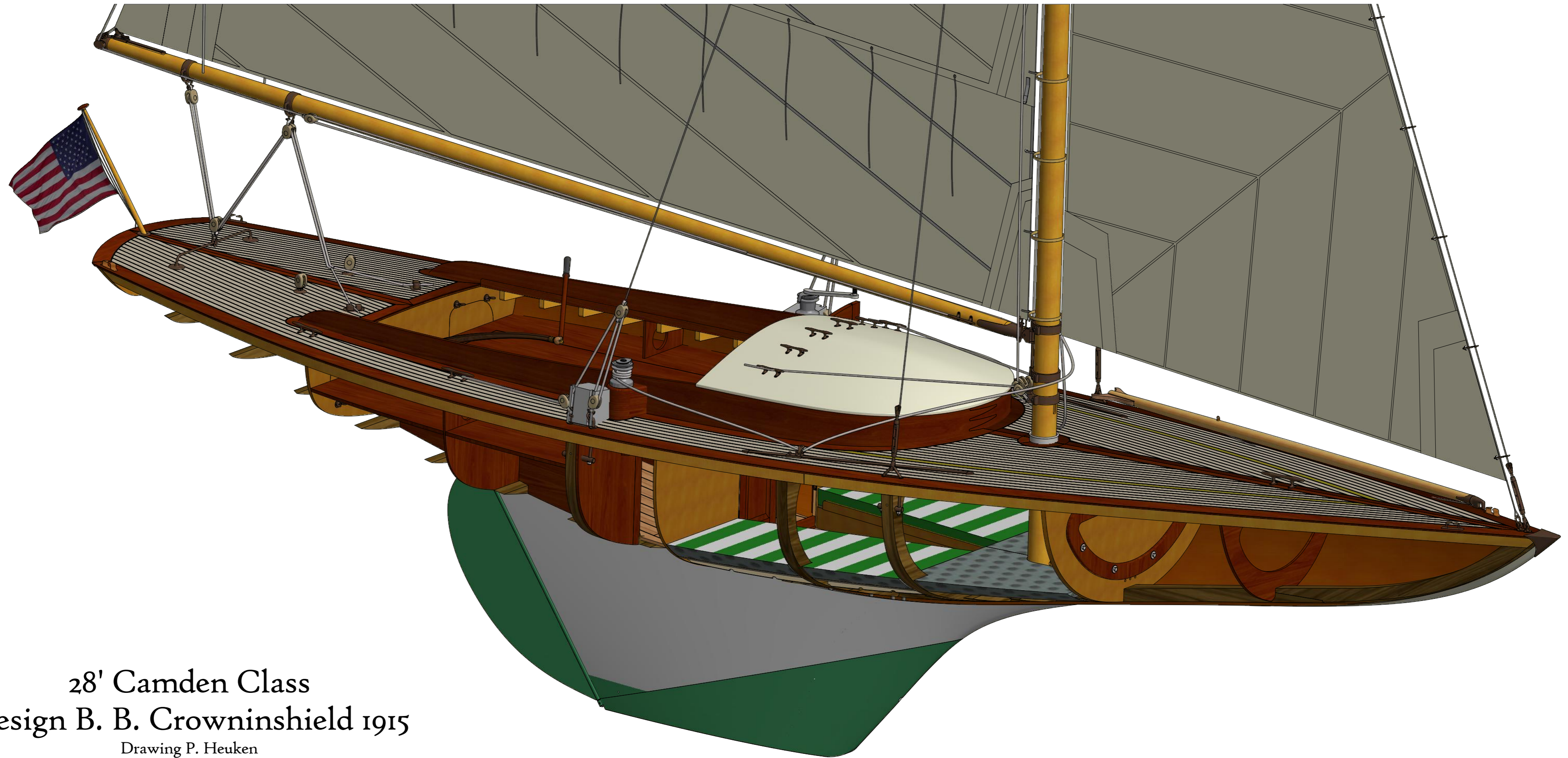
F-F (1 : 20)



28' Camden Class
Design B. B. Crowninshield 1915
Drawing P. Heuken
www.C28.de

8 7 6 5 4 3 2 1





28' Camden Class
Design B. B. Crowninshield 1915

Drawing P. Heuken
www.C28.de